

- ① TEMPERATURE SENSOR FURNISHED BY MANUFACTURER, INSTALLED AND WIRED BY MECHANICAL CONTRACTOR 48" A.F.F. SEE SHEET M04.1 FOR RESPONSIBILITY SCHEDULE.
- ② DUCT MOUNTED RETURN AIR SMOKE DETECTOR FURNISHED BY FIRE ALARM CONTRACTOR AND INSTALLED IN DUCT BY MECHANICAL CONTRACTOR. POWER WIRING SHALL BE PROVIDED BY ELECTRICAL CONTRACTOR. INTERLOCK TO SHUT DOWN UNIT UPON ACTIVATION OF SMOKE DETECTOR..
- ③ TENANT CONTRACTOR SHALL FIELD VERIFY EXACT LOCATION OF ALL HVAC EQUIPMENT. COORDINATE WITH LANDLORD ENGINEER PRIOR TO BID AND CONSTRUCTION.
- ④ CONNECT TO LANDLORDS EXHAUST SYSTEM. FIELD VERIFY REQUIREMENTS PRIOR TO BID.
- ⑤ SUPPLY AIR TEMPERATURE SENSOR FURNISHED BY MANUFACTURER, INSTALLED AND WIRED IN DUCT BY MECHANICAL CONTRACTOR. SEE SHEET M04.1 FOR RESPONSIBILITY SCHEDULE.
- ⑥ CONNECT TO LANDLORDS OUTSIDE AIR SYSTEM. FIELD VERIFY REQUIREMENTS PRIOR TO BID.
- ⑦ THE MECHANICAL CONTRACTOR SHALL FURNISH AND INSTALL 1-1/4" CHILLED WATER PIPING FROM THE EXISTING LANDLORD MAINS TO THE AIR HANDLING EQUIPMENT AS SHOWN ON PLANS. CONTRACTOR MUST VERIFY EXISTING TAP SIZES, PRIOR TO BID AND INCLUDE NEW TAPS IN BID IF REQUIRED. CONTRACTOR SHALL COORDINATE/CONFIRM DRAIN DOWN/HOT TAPS IN THE FIRST TWO WEEKS OF THE PROJECT. THE CONTRACTOR SHALL VERIFY SYSTEM PRESSURE, FLOW AND WATER TEMPERATURE BEFORE INSTALLING SYSTEM. PIPING SHALL BE INSTALLED IN ACCORDANCE WITH THE LANDLORD'S SYSTEM REQUIREMENTS AND AS DETAILED ON PLANS. UPON COMPLETION OF INSTALLATION, CONTRACTOR MUST SUBMIT A CERTIFIED TEST AND BALANCE REPORT TO THE LANDLORD FOR REVIEW AND APPROVAL. THE REPORT SHALL INCLUDE CHILLED WATER TEMPERATURES AND FLOW RATES (AS APPLICABLE) AND ALL AIR FLOW BALANCE DATA.

NOTE:
ANY EXISTING DEMISING WALL OPENINGS ARE TO REMAIN.

NOTE:
SEE ARCHITECTURAL DRAWINGS FOR CEILING HEIGHTS

MECHANICAL PLAN KEYNOTES

NTS

D

11/11/11

LANDLORD MECHANICAL COMMENTS:

TGC TO CONTACT MALL OPERATIONS TO VERIFY COMPLIANCE OF EXISTING CONTROLS OR TO UPGRADE AS REQUIRED.

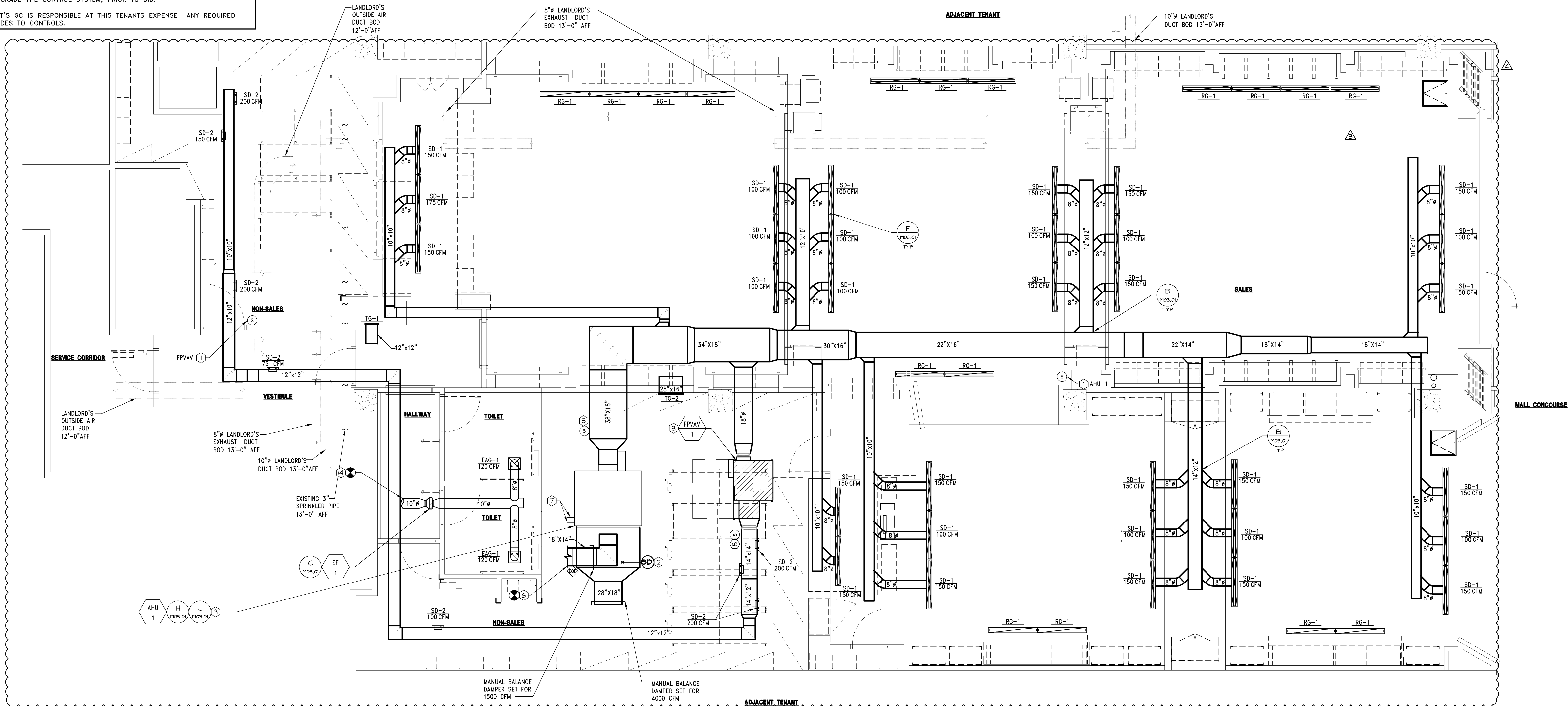
ALL DUCTWORK SHALL BE SHEET METAL EXTERNALLY INSULATED. FLEX DUCT MAY ONLY BE USED IN RUNS OF 5'-0" OR LESS AND MAY BE USED FOR VERTICAL CONNECTIONS AND SUPPLY DIFFUSERS ONLY.

EXTERNAL FOIL WRAP INSULATION IS MANDATORY FOR ALL SUPPLY AIR DUCT IN CLOSED CEILING AREAS. TENANT MUST SERVICE AHU. UTILIZE LANDLORD APPROVED HVAC CONTRACTOR AND SUBMIT A REPORT TO MALL MANAGEMENT TO APPROVE REUSE OF EXISTING HVAC EQUIPMENT.

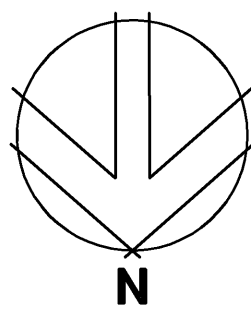
ALL REQUIRED UPGRADES SHALL BE BY THIS TENANT AT THIS TENANT'S EXPENSE.

PLEASE BE ADVISED THAT YOUR HVAC CONTROL SYSTEM MUST BE ELECTRIC AND A CIRCUIT SETTER MUST BE INSTALLED IN THE CHILLED WATER SUPPLY LINE. TENANT SHALL CONTACT THE MALL O.D. REGARDING ALL REQUIREMENTS TO UPGRADE THE CONTROL SYSTEM, PRIOR TO BID.

TENANT'S GC IS RESPONSIBLE AT THIS TENANTS EXPENSE ANY REQUIRED UPGRADES TO CONTROLS.



"VERIFY ALL FIELD CONDITIONS PRIOR TO BID"



MECHANICAL PLAN

1/4" = 1'-0"

A

SHREMSHOCK

Shremshock Engineering, Inc.
6130 S. Sunbury Rd. Westerville, OH 43081
T: 614 545 4550 | F: 614 545 4555 | shremshock.com
TX Registration Number: #F-5906

ELITE CONSTRUCTION GROUP
LAKE JACKSON, TX
PHONE: 979-285-8712
NOTE: THESE PRINTS HAVE BEEN
REDUCED BY 50 PERCENT. SCALE
WILL BE 50 PERCENT OF WHAT IS
NOTED ON PLANS

Limitedbrands
LIMITED STORE PLANNING, INC.
d/b/a STORE DESIGN & CONSTRUCTION
Three Limited Parkway • Columbus, Ohio 43230
Telephone: 614.415.7000 • Fax: 614.415.7349

THESE DRAWINGS AND SPECIFICATIONS ARE PREPARED FOR USE ON A SPECIFIC SITE. THE CONTRACTOR SHALL BE RESPONSIBLE FOR VERIFYING THE EXISTING CONDITIONS AND FOR OBTAINING ALL NECESSARY PERMITS AND APPROVALS PRIOR TO CONSTRUCTION. THE CONTRACTOR SHALL BE RESPONSIBLE FOR OBTAINING ALL NECESSARY PERMITS AND APPROVALS PRIOR TO CONSTRUCTION. THE CONTRACTOR SHALL BE RESPONSIBLE FOR OBTAINING ALL NECESSARY PERMITS AND APPROVALS PRIOR TO CONSTRUCTION.

PROJECT INFORMATION:
24200161
BATH & BODY WORKS
THE GALLERIA II
SPACE NO. 100
5006 WESTMEIER RD.
HOUSTON, TX 77056
FULL REMODEL
EASTON-G
00061216
A/E PROJECT #:
130840

REVISIONS:
REVISION NO. DATE
BUILDING DEPARTMENT COMMENTS 04/11/14
DESIGN CHANGES/ LANDLORD COMMENTS 05/06/14
MASTERS UPDATES 06/28/14
DESIGN CHANGES 06/27/14

DATE ISSUED: 3/7/14
DESIGNED BY: JPM
DRAWN BY: JPM
CHECKED BY: WRG

MECHANICAL PLAN

DRAWING NUMBER:

M02.01